



Carrier Software
1-800-646-5152
info@CarrierSoftware.com

CONFIDENTIAL - Intended for use by Amerigo Insurance Agency - Date: 5/23/2025

L D H TRANSPORT LLC - DOT# 2857419 / MC956698

Business Address

2627 KRISTEN ST
LIVE OAK, CA
95953

Contact Info

(530)-844-1314
(530)-695-0370
LDHTRANSPORT11@GMAIL.COM

Mailing Address

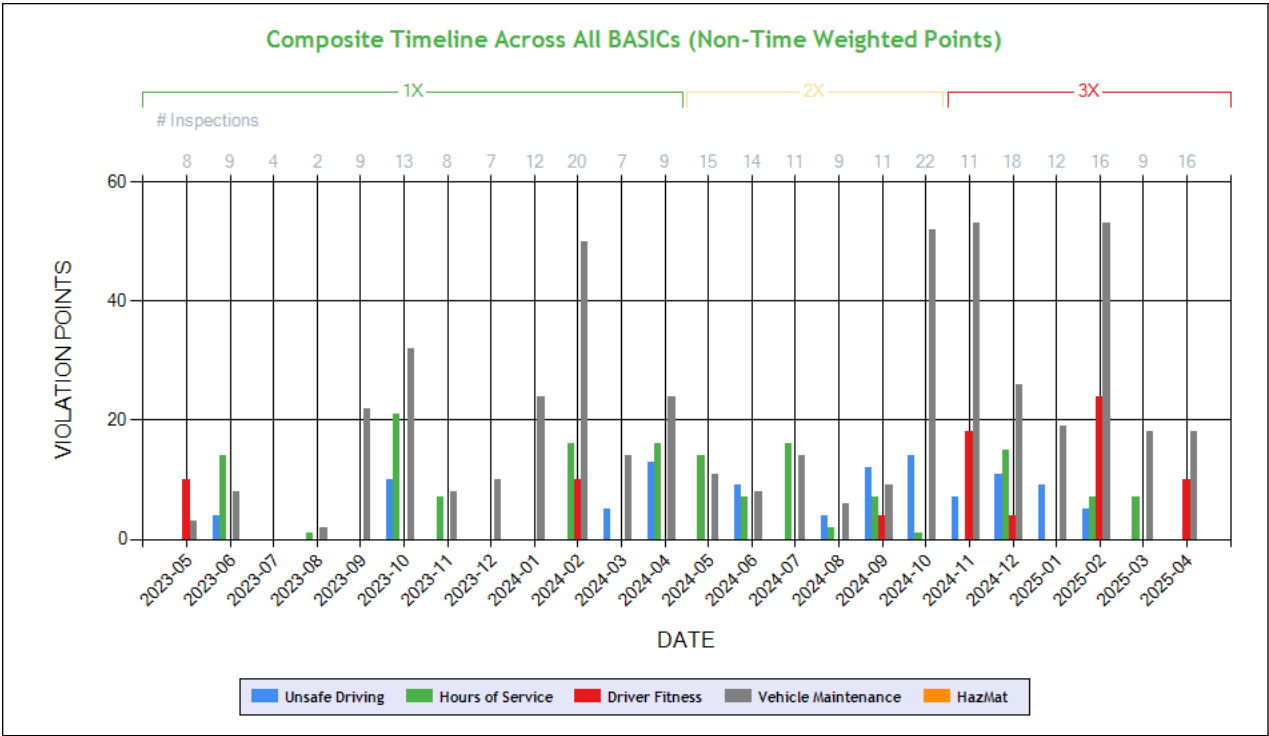
2627 KRISTEN ST
LIVE OAK, CA
95953-2829

Estimated BASIC Scores (as of 4/25/2025)							
	Unsafe Driving	Hours of Service	Driver Fitness	Controlled Sub./Alcohol	Vehicle Maintenance	Crash	
Relative Scores	80%	71%	92%	0%	35%	59%	
Alert Status	ALERT (8)	ALERT (44)	ALERT (3)	No	No	Within 10% points	
Shipper Name		Number of Inspections		Shipper Name		Number of Inspections	
No Shipper listed		37		SWANSON GROUP		17	
MURPHY PLYWOOD		14		MURPHY		10	
WALMART		6		SWANSON GROUP MFG		5	
COLUMBIA		3		HOME DEPOT		3	
JIM THORP LUMBER		3		MURPHY LUMBER		3	
ROGUE RIVER PLYWOOD		3		FOREST PLYWOOD		2	
HAMPTON LUMBER		2		HAMPTON LUMBER SALES		2	
PACIFIC WOOD		2		PRATT RETAIL		2	
SWANSON GROUP GLENDALE		2		TIMBER PRODUCTS		2	
3M WESTERN DIST. CENTER		1		8073669		1	

Inspection Summary By Month (based on inspections from the last 1 years)						
Year-Month	Number of Inspections	Number of Power Units	Total Violations	Total OOS Inspections	Total Severity Points	Number of Crashes
2025-05	12	12	5	2	25	0
2025-04	21	21	8	4	34	0
2025-03	9	9	7	2	21	0
2025-02	16	16	16	4	77	0
2025-01	12	12	7	1	26	0
2024-12	18	18	13	3	54	0
2024-11	11	11	16	1	72	1
2024-10	22	22	18	2	57	0
2024-09	11	11	10	0	22	1
2024-08	9	9	4	0	4	0
2024-07	11	11	6	1	21	0
2024-06	14	14	7	2	18	0
2024-05	15	15	10	2	36	0
Note: The most recent month's counts may not include all the inspections for that month.						



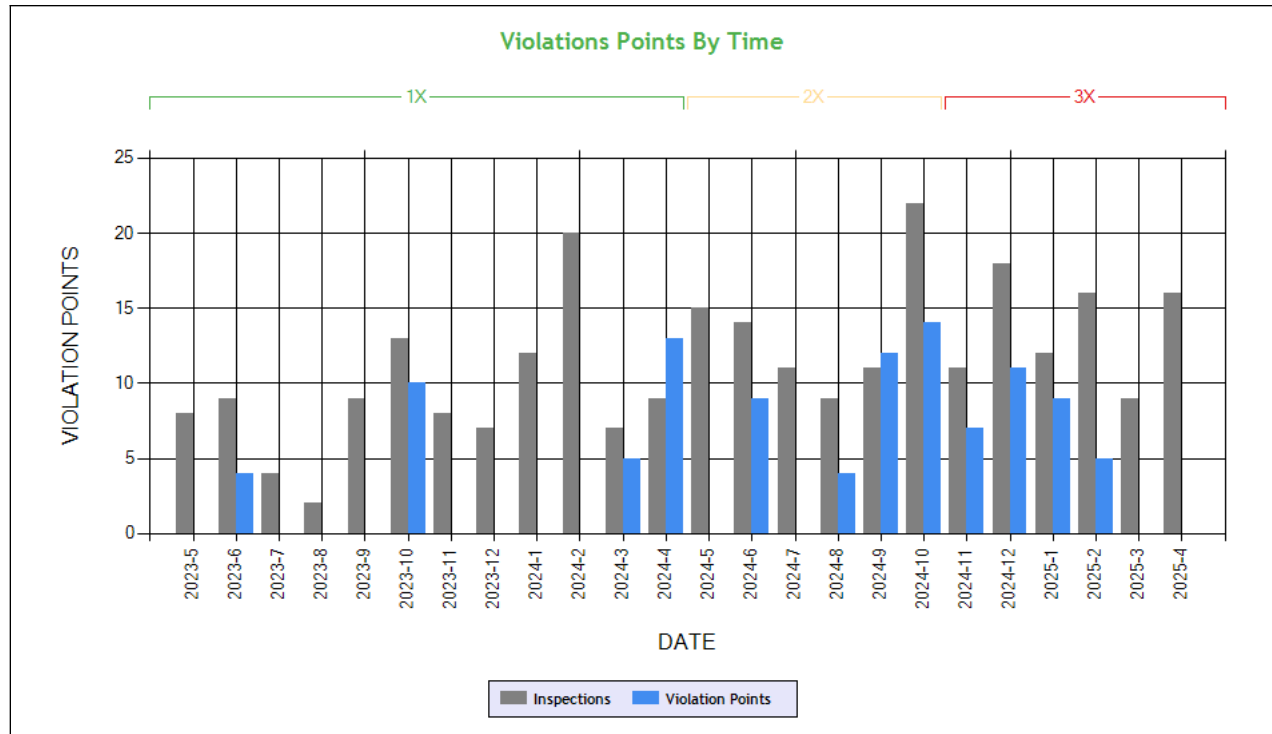
Carrier Underwriting Report Safety Summary





SAFETY ANALYSIS

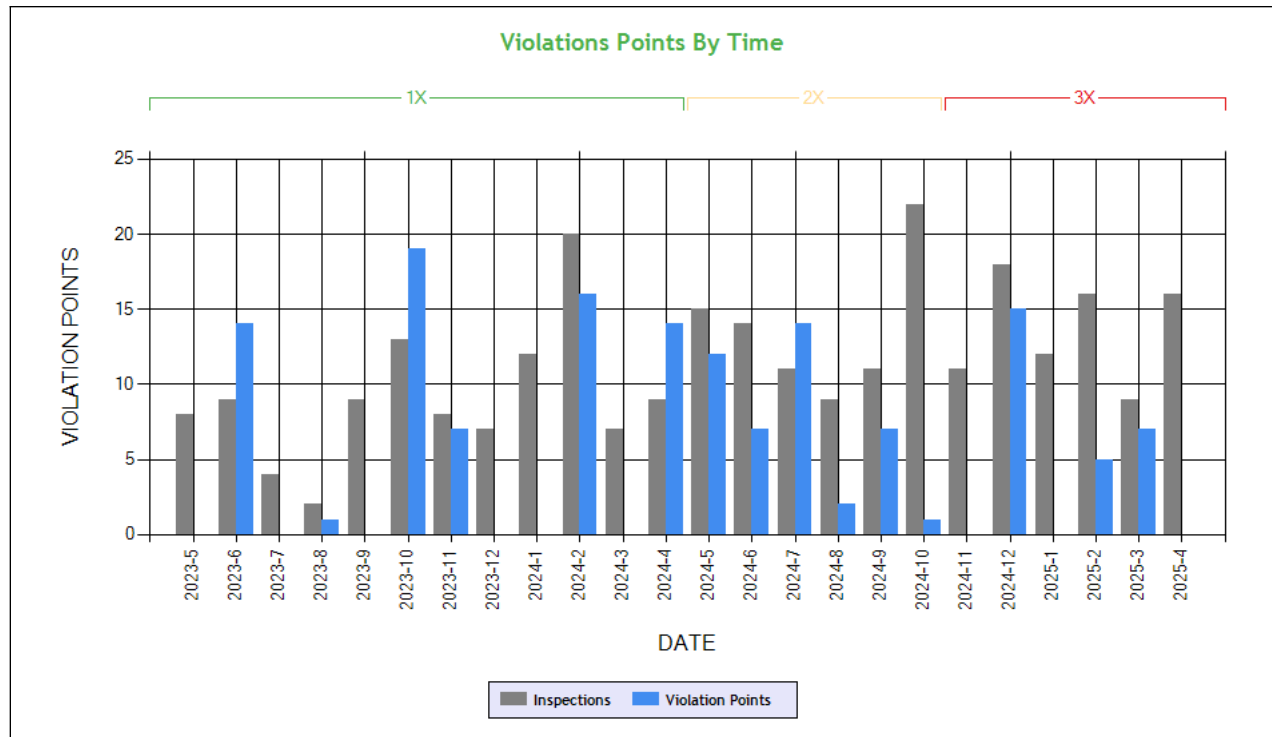
Unsafe Driving



Unsafe Driving Violation Summary							
Violation Code	Violation Description	1-6 Mos ago(3x)	7-12 Mos ago(2x)	13-24 Mos ago(1x)	Non Time-weighted Pts	Total Time-weighted Pts	% of Total Pts
392.2C	Failure to obey traffic control device	0	10	0	5	10	4.85
392.2SLLLR	STATE/LOCAL LAWS - LANE RESTRICTION VIOLATION.	9	6	0	6	15	7.28
392.2SLLML	State/Local Laws - Failure to maintain lane	15	0	0	5	15	7.28
392.2SLLS2	State/Local Laws - Speeding 6-10 miles per hour over the speed limit	24	24	12	32	60	29.13
392.2SLLS3	State/Local Laws - Speeding 11-14 miles per hour over the speed limit	0	28	0	14	28	13.59
392.2SLLS4	State/Local Laws - Speeding 15 or more miles per hour over the speed limit	30	0	10	20	40	19.42
392.2SLLTCD	STATE/LOCAL LAWS - FAILED TO OBEY A TRAFFIC CONTROL DEVICE - PERMANENT OR TEMPORARY - E.G. SAFETY OFFICIAL SIGNAL SIGN LIGHT LANE MARKING OTHER.	15	0	0	5	15	7.28
392.2SLLUP	STATE/LOCAL LAWS - UNLAWFULLY PARKING /LEAVING VEHICLE ON ROADWAY.	3	0	0	1	3	1.46
392.2T	Improper turns	0	10	0	5	10	4.85
392.71A	Using or equipping a CMV with radar detector	0	0	10	10	10	4.85



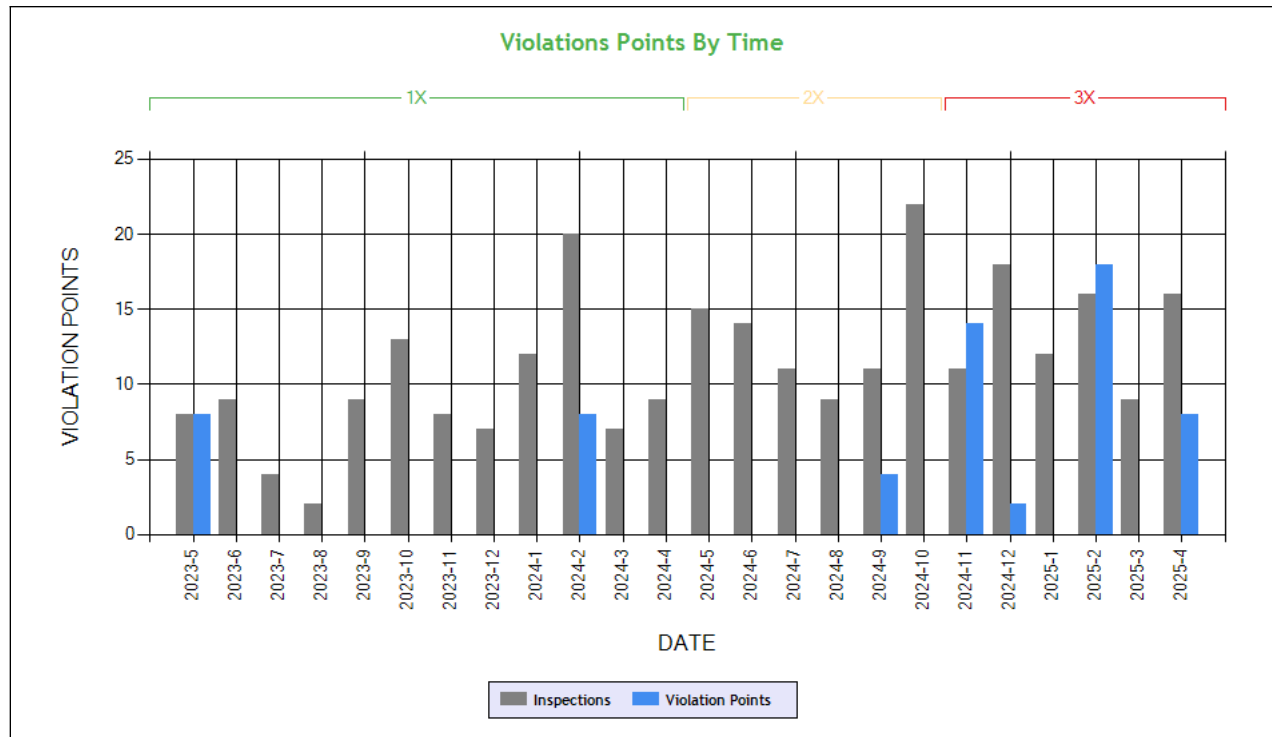
HOS Compliance



HOS Compliance Violation Summary							
Violation Code	Violation Description	1-6 Mos ago(3x)	7-12 Mos ago(2x)	13-24 Mos ago(1x)	Non Time-weighted Pts	Total Time-weighted Pts	% of Total Pts
395.11G	Failing to provide supporting documents in the driver's possession upon request	0	0	7	7	7	2.94
395.22G	Portable ELD not mounted in a fixed position and visible to driver	0	4	0	2	4	1.68
395.22GELDMFV	HOS (ELD) - A PORTABLE ELD IS NOT MOUNTED IN A FIXED POSITION AND VISIBLE TO THE DRIVER WHEN SEATED IN THE NORMAL DRIVING POSITION.	0	2	0	1	2	0.84
395.24C2III	Driver failed to manually add shipping document number	0	6	1	4	7	2.94
395.26B	Motor carrier failed to ensure that the ELD automatically recorded the required data elements.	0	0	2	2	2	0.84
395.30B1	Driver failed to certify the accuracy of the information gathered by the ELD	0	0	1	1	1	0.42
395.30B2ELDDFC24	HOS (ELD) - DRIVER FAILING TO CERTIFY THE RECORD IMMEDIATELY AFTER THE FINAL REQUIRED ENTRY HAS BEEN MADE OR CORRECTED FOR THE 24 HOUR PERIOD.	3	0	0	1	3	1.26
395.34A1	Failing to note malfunction that requires use of paper log	0	20	0	10	20	8.40
395.3A2PROP	Driving beyond 14 hour duty period (Property carrying vehicle)	0	0	7	7	7	2.94
395.3A3PROP	Driving beyond 11 hour driving limit in a 14 hour period. (Property Carrying Vehicle)	0	0	7	7	7	2.94
395.8	Driver record of duty status (general/form and manner)	0	2	1	2	3	1.26
395.8A1HOSP	HOS (PROPERTY) - FAILING TO HAVE A RECORD OF DUTY STATUS USING THE METHOD PRESCRIBED.	15	0	0	5	15	6.30
395.8AELD	ELD - No record of duty status (ELD Required)	0	10	5	10	15	6.30
395.8E	False report of drivers record of duty status	0	14	35	42	49	20.59
395.8EHOSPCDOOS	HOS (PROPERTY) - CO-DRIVER PRODUCES A FALSE RECORD OF DUTY STATUS WITH AN APPARENT ATTEMPT TO CONCEAL HOURS. EXPLAIN:	0	14	0	7	14	5.88
395.8EHOSPD	HOS (PROPERTY) - NO DRIVER MAY MAKE A FALSE REPORT IN CONNECTION WITH A DUTY STATUS. EXPLAIN:	63	14	0	28	77	32.35
395.8K2	Driver failing to retain previous 7 days' logs	0	0	5	5	5	2.10



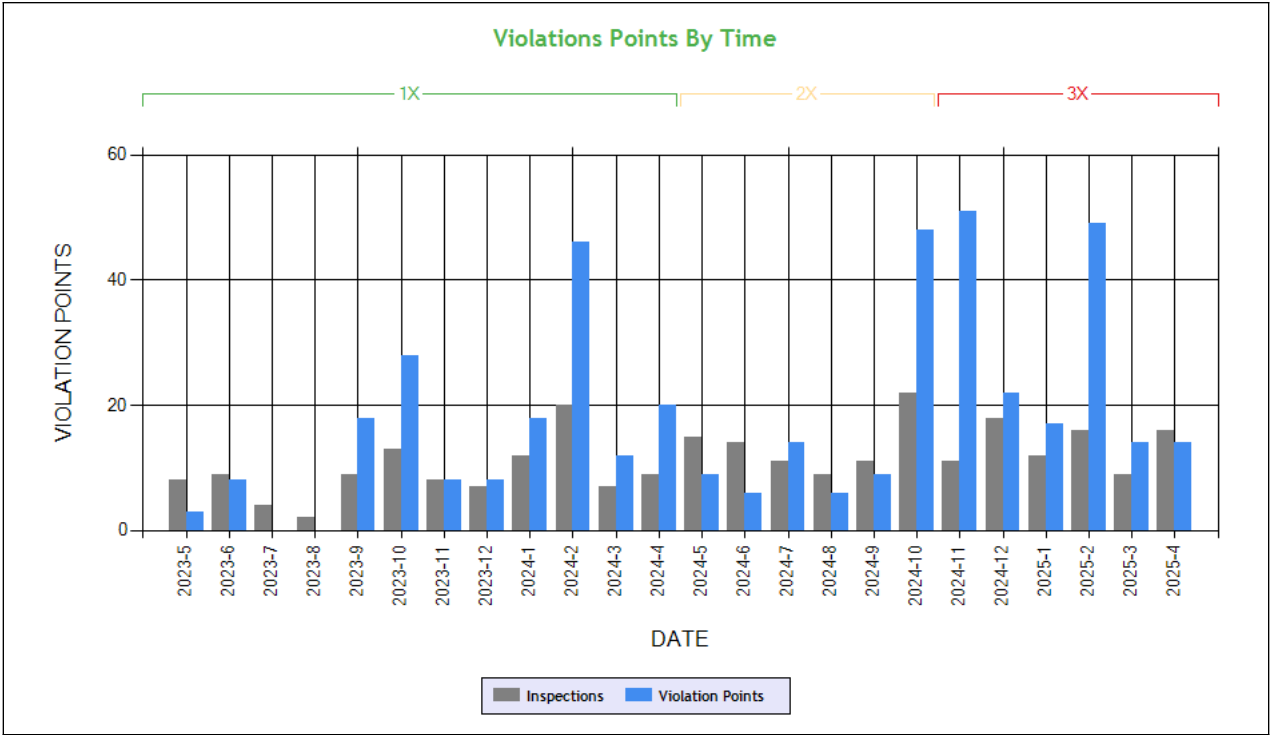
Driver Fitness



Driver Fitness Violation Summary							
Violation Code	Violation Description	1-6 Mos ago(3x)	7-12 Mos ago(2x)	13-24 Mos ago(1x)	Non Time-weighted Pts	Total Time-weighted Pts	% of Total Pts
383.23A2	Operating a CMV without a CDL	0	0	8	8	8	5.33
383.23A2LCDLN	LICENSE (CDL) - OPERATE A CMV AND DOES NOT POSSESS A VALID CDL.	48	0	0	16	48	32.00
383.51ASIN	Driving a CMV while CDL is suspended for a safety-related or unknown reason and in the state of driver license issuance.	0	0	8	8	8	5.33
383.95ALCDL	RESTRICTION - (CDL) - OPERATE A CMV IN VIOLATION OF AIRBRAKE RESTRICTION.	24	0	0	8	24	16.00
391.11B2	Driver cannot read or speak the English language sufficiently to respond to official inquiries.	0	8	0	4	8	5.33
391.11B2Q	DRIVER CANNOT READ AND SPEAK THE ENGLISH LANGUAGE SUFFICIENTLY TO CONVERSE WITH THE GENERAL PUBLIC TO UNDERSTAND HIGHWAY TRAFFIC SIGNS AND SIGNALS IN THE ENGLISH	12	0	0	4	12	8.00
391.11B5LNCDLNVL	LICENSE (NON-CDL) - OPERATE A CMV WITHOUT A VALID OPERATORS LICENSE ISSUED BY ONE STATE OR JURISDICTION.	24	0	0	8	24	16.00
391.41B10MC	MEDICAL (CERTIFICATE) - OPERATING A COMMERCIAL VEHICLE WITHOUT CORRECTIVE LENSES OR HEARING AID AS INDICATED ON THE DRIVER'S MEDICAL CERTIFICATE.	18	0	0	6	18	12.00



Vehicle Maintenance





Vehicle Maintenance Violation Summary							
Violation Code	Violation Description	1-6 Mos ago(3x)	7-12 Mos ago(2x)	13-24 Mos ago(1x)	Non Time-weighted Pts	Total Time-weighted Pts	% of Total Pts
392.2LSLSCR	STATE/LOCAL LAWS - CMV SAFETY CHAINS.	24	0	0	8	24	2.76
392.7AD	DRIVER - FAILED TO CONDUCT PRE-TRIP INSPECTION OR MAKE USE OF REQUIRED PARTS AND ACCESSORIES.	12	0	0	4	12	1.38
393.11A1LCHL	Lighting - Lamps improper color height location.	18	0	0	6	18	2.07
393.11A1LFTSM	LIGHTING - FRONT - TURN SIGNAL - MISSING.	18	0	0	6	18	2.07
393.11A1LSLM	LIGHTING - STOP LAMPS - ANY MISSING.	0	12	0	6	12	1.38
393.201A	Frame cracked / loose / sagging / broken	0	0	2	2	2	0.23
393.201BFR	FRAME - CAB OR BODY MOUNTS LOOSE/BROKEN/MISSING.	0	4	0	2	4	0.46
393.203E	Cab front bumper missing/ unsecured/protruding	0	0	2	2	2	0.23
393.205CWRAWFLMI B	WHEEL/RIM - ANY WHEEL FASTENERS LOOSE/MISSING/INEFFECTIVE/BROKEN.	6	0	0	2	6	0.69
393.207A	Axle positioning parts defective/missing	0	14	0	7	14	1.61
393.207B	Adjustable axle locking pin missing/disengaged	0	0	7	7	7	0.80
393.207BAALPME	ANY OF THE LOCKING PINS ARE MISSING OR NOT ENGAGED.	21	0	0	7	21	2.41
393.207BAALPMEOS	MORE THAN 25% OF THE LOCKING PINS ARE MISSING OR NOT ENGAGED.	21	0	0	7	21	2.41
393.207FSDAS	SUSPENSION - DEFLATED AIR SUSPENSION.	21	0	0	7	21	2.41
393.207FSLAS	SUSPENSION - LEAKING 3 PSI IN 5 MINUTES.	21	0	0	7	21	2.41
393.25AL	LIGHTING - LAMPS (OTHER THAN HEADLAMPS) NOT SECURELY MOUNTED.	18	0	0	6	18	2.07
393.45B2	Failing to secure brake hose/tubing against mechanical damage	0	0	4	4	4	0.46
393.45B2BHTD	AIR BRAKE - HOSE/TUBING DAMAGE EXTENDING THROUGH THE OUTER REINFORCEMENT PLY.	12	0	0	4	12	1.38
393.45DB	AIR BRAKE - AUDIBLE AIR LEAK AT A PROPER CONNECTION.	12	0	0	4	12	1.38
393.45DBAAL	AIR BRAKE - AUDIBLE AIR LEAK AT OTHER THAN A PROPER CONNECTION.	12	0	0	4	12	1.38
393.47A	Inadequate brakes for safe stopping	0	8	0	4	8	0.92
393.47E	Clamp/Roto-Chamber type brake(s) out of adjustment	60	16	28	56	104	11.94
393.48A	Inoperative/defective brakes	0	0	4	4	4	0.46
393.48ABIBD	DRUM BRAKE - INOPERATIVE OTHER THAN A STEERING AXLE.	0	8	0	4	8	0.92
393.53B	Automatic brake adjuster CMV manufactured on or after 10/20/1994 - air brake	24	16	24	40	64	7.35
393.55D3	No or Defective ABS Malfunction Indicator for towed vehicles on vehicles manufactured after February 2001	0	0	4	4	4	0.46
393.55EB	AIR BRAKE - ABS MALFUNCTION LAMP DEFECTIVE ON TRAILERS MANUFACTURED ON OR AFTER MARCH 1 1998.	36	8	0	16	44	5.05
393.60C	Damaged or discolored windshield	0	2	0	1	2	0.23
393.60EWS	Windshield - Obstructed	0	0	1	1	1	0.11
393.75A3	Tire -flat and/or audible air leak	0	0	64	64	64	7.35
393.75A3TAOL	TIRES - ALL OTHERS LEAKING OR INFLATION LESS THAN 50% OF THE MAXIMUM INFLATION PRESSURE.	96	16	0	40	112	12.86
393.78	Windshield wipers inoperative/defective	0	0	1	1	1	0.11
393.9	Inoperative required lamps	0	8	2	6	10	1.15
393.95A1	EMERGENCY EQUIPMENT - FIRE EXTINGUISHERS - NO FIRE EXTINGUISHER PRESENT OR NOT PROPERLY RATED.	6	0	0	2	6	0.69
393.9ALFTSI	LIGHTING - FRONT - TURN SIGNAL - INOPERATIVE.	36	12	0	18	48	5.51
393.9ALHLI	LIGHTING - HEADLAMP(S) - ANY INOPERATIVE.	0	12	0	6	12	1.38
393.9ALSLIWR	LIGHTING - STOP LAMPS - BOTH INOPERATIVE WHEN REQUIRED TO BE ON.	18	0	0	6	18	2.07
393.9ALSML	LIGHTING - SIDE MARKER LAMP(S) INOPERATIVE.	18	0	0	6	18	2.07
393.9H	Inoperative head lamps	0	12	0	6	12	1.38
393.9TS	Inoperative turn signal	0	12	18	24	30	3.44
396.3A1	Inspection/repair and maintenance parts and accessories	0	0	4	4	4	0.46
396.3A1BALAC	BRAKE - AUDIBLE AIR LEAK FROM A BRAKE CHAMBER	24	8	0	12	32	3.67
396.3A1BL	Brake system pressure loss	0	0	4	4	4	0.46
396.3A1BOS	BRAKES OUT OF SERVICE: The number of defective brakes is equal to or greater than 20 percent of the service brakes on the vehicle or combination	0	0	0	0	0	0

VIN ToC						
# of VINs: 10			# of Insp: 32	Total Severity: 315		Avg. Severity/VIN: 10
VIN	Type	License Plate	# of Insp	Total Severity	% of Total	Average Severity Per Insp
3AKJHHDR1MSMK4373	PU	CA XP78072	4	40	12.7%	10
1UYYS2533J3300227	T	CA 4RL9475	4	38	12.06%	9
3AKJHHDR7MSNA1291	PU	CA YP05267	4	38	12.06%	9
3AKJHHDR5NSNA1324	PU	CA YP40874	5	37	11.75%	7
3AKJHHDR2KSKD3263	PU	CA ZP16787	3	34	10.79%	11



3AKJHHDR1LSKW2498	PU	CA ZP26471	3	31	9.84%	10
3AKJHHDR2NSLJ2408	PU	CA ZP37474	1	28	8.89%	28
1UYVS2533FP294218	T	CA 4PV1944	3	23	7.3%	7
3AKJHHDR3LSKW2468	PU	CA ZP16849	3	23	7.3%	7
3H3V532CCKT680613	T	ME 427388Y	2	23	7.3%	11

Violations By Unit Type

of Violations: 109 Total Severity: 452 based on inspections in the last 1 years

Violation Unit: Driver	# of Violations: 46	Total Severity: 180	% of Total: 39.82%
Viol. Group: License-related: High	# of Violations: 5	Total Severity: 40	% of Total: 8.85%
Violation	Number of Occurrences	Viol. Severity	Total Severity
383.23A2LCDL:ENDORSEMENTS - (CDL) - OPERATE A CMV WITHOUT PROPE	1	8	8
383.23A2LCDL:LICENSE (CDL) - OPERATE A CMV AND DOES NOT POSSESS	2	8	16
383.95ALCDL:RESTRICTION - (CDL) - OPERATE A CMV IN VIOLATION O	1	8	8
391.11B5LNCNLDNLV:LICENSE (NON-CDL) - OPERATE A CMV WITHOUT A VALID	1	8	8
Viol. Group: False Log	# of Violations: 5	Total Severity: 35	% of Total: 7.74%
395.8E:False report of drivers record of duty status	1	7	7
395.8EHOSPD:HOS (PROPERTY) - NO DRIVER MAY MAKE A FALSE REPORT	4	7	28
Viol. Group: None	# of Violations: 8	Total Severity: 20	% of Total: 4.42%
395.22G:Portable ELD not mounted in a fixed position and v	2	1	2
395.24C2III:Driver failed to manually add shipping document nu	3	1	3
395.34A1:Failing to note malfunction that requires use of p	2	5	10
395.8AELD:ELD - No record of duty status (ELD Required)	1	5	5
Viol. Group: Dangerous Driving	# of Violations: 3	Total Severity: 15	% of Total: 3.32%
392.2SLLML:State/Local Laws - Failure to maintain lane	1	5	5
392.2SLLTCD:STATE/LOCAL LAWS - FAILED TO OBEY A TRAFFIC CONTRO	1	5	5
392.2T:Improper turns	1	5	5
Viol. Group: Speeding 2	# of Violations: 3	Total Severity: 12	% of Total: 2.65%
392.2SLLS2:State/Local Laws - Speeding 6-10 miles per hour ov	3	4	12
Viol. Group: Speeding 4	# of Violations: 1	Total Severity: 10	% of Total: 2.21%
392.2SLLS4:State/Local Laws - Speeding 15 or more miles per h	1	10	10
Viol. Group: General Driver Qualification	# of Violations: 2	Total Severity: 8	% of Total: 1.77%
391.11B2:Driver cannot read or speak the English language s	1	4	4
391.11B2Q:DRIVER CANNOT READ AND SPEAK THE ENGLISH LANGUAGE	1	4	4
Viol. Group: Tires	# of Violations: 1	Total Severity: 8	% of Total: 1.77%
392.2SLSCR:STATE/LOCAL LAWS - CMV SAFETY CHAINS.	1	8	8
Viol. Group: Speeding 3	# of Violations: 1	Total Severity: 7	% of Total: 1.55%
392.2SLLS3:State/Local Laws - Speeding 11-14 miles per hour o	1	7	7
Viol. Group: Misc Violations	# of Violations: 2	Total Severity: 6	% of Total: 1.33%
392.2SLLLR:STATE/LOCAL LAWS - LANE RESTRICTION VIOLATION.	2	3	6
Viol. Group: Physical	# of Violations: 3	Total Severity: 6	% of Total: 1.33%
391.41B10MC:MEDICAL (CERTIFICATE) - OPERATING A COMMERCIAL VEH	3	2	6
Viol. Group: Incomplete/Wrong Log	# of Violations: 1	Total Severity: 5	% of Total: 1.11%
395.8A1HOSP:HOS (PROPERTY) - FAILING TO HAVE A RECORD OF DUTY	1	5	5
Viol. Group: Inspection Reports	# of Violations: 1	Total Severity: 4	% of Total: 0.88%
392.7AD:DRIVER - FAILED TO CONDUCT PRE-TRIP INSPECTION OR	1	4	4
Viol. Group: Other Log/Form & Manner	# of Violations: 2	Total Severity: 2	% of Total: 0.44%
395.30B2ELDDFC24:HOS (ELD) - DRIVER FAILING TO CERTIFY THE RECORD I	1	1	1
395.8:Driver record of duty status (general/form and ma	1	1	1
Viol. Group: EOBR Related	# of Violations: 1	Total Severity: 1	% of Total: 0.22%
395.22GELDMFV:HOS (ELD) - A PORTABLE ELD IS NOT MOUNTED IN A FIX	1	1	1
Viol. Group: Other Driver Violations	# of Violations: 1	Total Severity: 1	% of Total: 0.22%
392.2SLLUP:STATE/LOCAL LAWS - UNLAWFULLY PARKING /LEAVING VEH	1	1	1
Viol. Group: Not used in SMS Calculation	# of Violations: 6	Total Severity: 0	% of Total: 0%
392.2:Operating a commercial motor vehicle not in accord	2	0	0
392.2DIM:Dimension Violation (Width / Height / Length)	1	0	0
392.2DL:Miscellaneous Drivers License Violation	2	0	0
392.2SLLLEWA1:State/Local Laws - Excessive Weight - 1-2500 Lbs O	1	0	0
Violation Unit: Power Unit	# of Violations: 28	Total Severity: 107	% of Total: 23.67%
Viol. Group: Lighting	# of Violations: 8	Total Severity: 48	% of Total: 10.62%
Violation	Number of Occurrences	Viol. Severity	Total Severity
393.9ALFTSI:LIGHTING - FRONT - TURN SIGNAL - INOPERATIVE.	3	6	18
393.11A1LCHL:Lighting - Lamps improper color height location.	1	6	6



393.11A1LFTSM:LIGHTING - FRONT - TURN SIGNAL - MISSING.	1	6	6
393.25AL:LIGHTING - LAMPS (OTHER THAN HEADLAMPS) NOT SECURE	1	6	6
393.9ALHLI:LIGHTING - HEADLAMP(S) - ANY INOPERATIVE.	1	6	6
Viol. Group: Suspension	# of Violations: 3	Total Severity: 21	% of Total: 4.65%
393.207A:Axle positioning parts defective/missing	1	7	7
393.207FSDAS:SUSPENSION - DEFLATED AIR SUSPENSION.	1	7	7
393.207FSLAS:SUSPENSION - LEAKING 3 PSI IN 5 MINUTES.	1	7	7
Viol. Group: Brakes All Others	# of Violations: 5	Total Severity: 20	% of Total: 4.42%
393.45B2BHTD:AIR BRAKE - HOSE/TUBING DAMAGE EXTENDING THROUGH T	1	4	4
393.45DB:AIR BRAKE - AUDIBLE AIR LEAK AT A PROPER CONNECTIO	1	4	4
393.45DBAAL:AIR BRAKE - AUDIBLE AIR LEAK AT OTHER THAN A PROPE	1	4	4
393.47A:Inadequate brakes for safe stopping	1	4	4
396.3A1BALAC:BRAKE - AUDIBLE AIR LEAK FROM A BRAKE CHAMBER	1	4	4
Viol. Group: Inspection Reports	# of Violations: 1	Total Severity: 4	% of Total: 0.88%
396.17CPI:OPERATING A CMV WITHOUT DOCUMENTATION OF A PERIODI	1	4	4
Viol. Group: Clearance Identification Lamps/Other	# of Violations: 2	Total Severity: 4	% of Total: 0.88%
393.9:Inoperative required lamps	1	2	2
393.9A:Inoperative required lamps	1	2	2
Viol. Group: ELD records	# of Violations: 1	Total Severity: 3	% of Total: 0.66%
395.24DELDPT:HOS (ELD) - On request by an authorized safety off	1	3	3
Viol. Group: Wheels Studs Clamps Etc.	# of Violations: 1	Total Severity: 2	% of Total: 0.44%
393.205CWRWFLMIB:WHEEL/RIM - ANY WHEEL FASTENERS LOOSE/MISSING/INEF	1	2	2
Viol. Group: Emergency Equipment	# of Violations: 1	Total Severity: 2	% of Total: 0.44%
393.95A1:EMERGENCY EQUIPMENT - FIRE EXTINGUISHERS - NO FIRE	1	2	2
Viol. Group: Cab Body Frame	# of Violations: 1	Total Severity: 2	% of Total: 0.44%
393.201B:Bolts securing cab broken/loose/missing	1	2	2
Viol. Group: Windshield/ Glass/ Markings	# of Violations: 1	Total Severity: 1	% of Total: 0.22%
393.60C:Damaged or discolored windshield	1	1	1
Viol. Group: Not used in SMS Calculation	# of Violations: 3	Total Severity: 0	% of Total: 0%
396.3A1BOS:BRAKES OUT OF SERVICE: The number of defective bra	1	0	0
392.2SLLEWA1:State/Local Laws - Excessive Weight - 1-2500 Lbs O	2	0	0
Viol. Group: Not used in SMS Calculation	# of Violations: 1	Total Severity: 0	% of Total: 0%
392.2:Operating a commercial motor vehicle not in accord	1	0	0
Violation Unit: Trailer	# of Violations: 35	Total Severity: 165	% of Total: 36.5%
Viol. Group: Tires	# of Violations: 6	Total Severity: 48	% of Total: 10.62%
Violation	Number of Occurrences	Viol. Severity	Total Severity
393.75A3TAOL:TIRES - ALL OTHERS LEAKING OR INFLATION LESS THAN	6	8	48
Viol. Group: Brakes All Others	# of Violations: 11	Total Severity: 44	% of Total: 9.73%
393.48A:Inoperative/defective brakes	1	4	4
393.53B:Automatic brake adjuster CMV manufactured on or af	4	4	16
393.55E:ABS - malfunctioning lamps towed CMV manufactured	1	4	4
393.55EB:AIR BRAKE - ABS MALFUNCTION LAMP DEFECTIVE ON TRAI	3	4	12
396.3A1BALAC:BRAKE - AUDIBLE AIR LEAK FROM A BRAKE CHAMBER	2	4	8
Viol. Group: Brakes Out of Adjustment	# of Violations: 7	Total Severity: 28	% of Total: 6.19%
393.47E:Clamp/Roto-Chamber type brake(s) out of adjustment	7	4	28
Viol. Group: Lighting	# of Violations: 3	Total Severity: 18	% of Total: 3.98%
393.9ALSLIWR:LIGHTING - STOP LAMPS - BOTH INOPERATIVE WHEN REQU	2	6	12
393.9ALSML:LIGHTING - SIDE MARKER LAMP(S) INOPERATIVE.	1	6	6
Viol. Group: Suspension	# of Violations: 2	Total Severity: 14	% of Total: 3.1%
393.207BAALPME:ANY OF THE LOCKING PINS ARE MISSING OR NOT ENGAGED	1	7	7
393.207BAALPMEOS:MORE THAN 25% OF THE LOCKING PINS ARE MISSING OR N	1	7	7
Viol. Group: Markings - HM	# of Violations: 1	Total Severity: 5	% of Total: 1.11%
177.823AHMPMCNP50%:HM (PLACARDING) - 50% OR MORE OF THE REQUIRED PLAC	1	5	5
Viol. Group: Inspection Reports	# of Violations: 1	Total Severity: 4	% of Total: 0.88%
396.17CPI:OPERATING A CMV WITHOUT DOCUMENTATION OF A PERIODI	1	4	4
Viol. Group: Cab Body Frame	# of Violations: 1	Total Severity: 2	% of Total: 0.44%
393.86A5:Rear Impact Guard Cross-section vertical height in	1	2	2
Viol. Group: Clearance Identification Lamps/Other	# of Violations: 1	Total Severity: 2	% of Total: 0.44%
393.9:Inoperative required lamps	1	2	2
Viol. Group: Not used in SMS Calculation	# of Violations: 2	Total Severity: 0	% of Total: 0%
396.3A1BOS:BRAKES OUT OF SERVICE: The number of defective bra	2	0	0